



*Nothing else measures up!*

**Follow us!**



Prospect House  
George Cayley Drive  
Clifton Moor  
York  
England  
YO30 4XE

Tel: +44 (0) 1904 692723  
Fax: +44 (0) 1904 690385

E-Mail: [sales@yorksurvey.co.uk](mailto:sales@yorksurvey.co.uk)



## USB Video Borescope



**Code: 28235**

## Operating Instructions

# USB Video Borescope

## GENERAL SAFETY INFORMATION

**WARNING!** Read and understand all instructions. Failure to follow all instructions listed below may result in electric shock, fire and/or serious personal injury.

## SAVE THESE INSTRUCTIONS!

- Prevent object and liquid entry. Never spill liquid of any kind on the video display unit. Liquid increases the risk of electrical shock and damage to the product.
- The unit is not shock-resistant. Do not use as a hammer and avoid high impact resultant from things such as dropping the unit from height.
- Do not immerse camera handle or LCD screen in water. Avoid moisture and store product in a dry place. Such measures reduce the risk of electric shock and damage. **The lens and the tube are water resistant when the unit is fully assembled, but the LCD screen and handle are not.**
- Do not use the camera if condensation forms inside the lens. Let the water evaporate before using again.
- Turn off the system if it is not in use.
- Attention should be given to the environmental aspects of battery disposal.
- Remove the batteries when cleaning the unit.
- Remove the batteries before storing the unit for a long time.
- When necessary, REPLACE ALL FOUR (4) BATTERIES in the unit with new ones, not one (1) or two (2) batteries at a time.
- Use only the size and type of battery specified.
- Be sure to install the battery with the correct polarity as indicated in the battery compartment.
- Properly dispose of batteries. Exposure to high temperatures can cause batteries to explode so do not dispose of in a fire. Place tape over the terminals to prevent direct contact with other objects.
- Some countries have regulations concerning battery disposal. Please follow all applicable regulations.

## WELCOME

Congratulations on your purchase of our inspection video camera with recordable colour LCD screen, the EXPLORER COMPACT. Please read the user manual carefully before using this product. This product is designed as a remote inspection device, capable of recording video/taking pictures. Appropriate for use in surveying pipes or other hard to reach places, equipment or furnishing installation, car repair, etc. Features include waterproof LED lens, real-time recording and micro SD card storage.

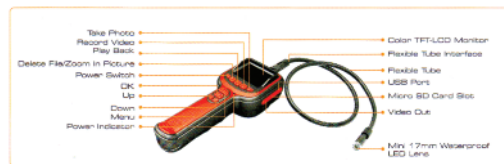
## FEATURES

- Allows for easy surveying of small, hard to reach places.
- Mini waterproof camera with 1m (3ft) flexible extended tube.
- Manufactured and tested to IP67 waterproof standard.
- 2.7" TFT-LCD monitor.
- OSD menu for operation.
- Video recording capability, supports up to 32GB micro SD card.
- Adjustable brightness on lens-mounted LED light.
- 3 useful accessories included; hook, mirror and magnet.
- Lightweight, handheld design, flexible and convenient to use.

## PACKING LIST



## STRUCTURE



## INSTALLATION

**To Install Batteries** (Dry your hands before installation or replacing batteries.)

- Remove battery cover.
- Insert four (4) AA batteries into their appropriate slots, with proper orientation, as indicated on the battery compartment.
- Replace battery cover.



## To Attach Flexible Tube with Handle

To connect the flexible tube camera with control handle, first make sure that the keyed end of the tube is aligned with the slot in the handle, then use slight force to push them together. Once properly aligned, twist the threaded knob clockwise until the connection is securely in place.



## To Install Extension Tube

To connect the extension tube, first align the keyed end with the slot in the handle. Use slight force to push them together. Once properly aligned, twist the threaded knob clockwise until the connection is securely in place. Repeat this process to connect the other end of the extension tube to the flexible camera tube.



## To Install Accessories

The three (3) included accessories (mirror, hook and magnet) are all attached to the camera in the same way as illustrated below:



## To Insert SD Card

After SD card is inserted into SD card slot successfully, an SD card icon will appear on the monitor screen; otherwise the 'no SD card' icon will show.

NOTE: If the device fails to read the TF card due to late insertion or some problem of the TF card, the screen displays "FORMAT TF CARD". If the TF card is in normal condition, press 'OK'; otherwise press YES to format the TF card.



## To Connect USB Cable

Use the provided USB cable to connect the monitor to any PC with a USB slot. Your computer should automatically recognise the new hardware, which you may browse by double-clicking on the My Computer icon on your desktop and then navigating into the Mobile Disk directory.



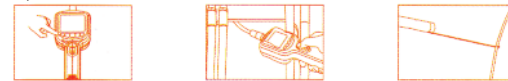
## Video Output

Insert video cable into the video out socket of the monitor, insert the other end of the cable into the video in jack of any compatible TV or display device. The LCD monitor is now capable of outputting high quality video to another display.

## OPERATION

### Switch on Camera

- Press and hold on the power switch for about 3 seconds to turn on the camera, the power indicator will illuminate and the LCD will become viewable.



- When in use, the tube should easily manoeuvre itself into position. Do not apply excessive force.
- The flexible tube can be bent into numerous shapes that may help you explore areas you otherwise thought were impossible to see.
- The accessories included with EXPLORER COMPACT can be used to retrieve small items like dropped rings or screws.

### Zoom in Picture

In real-time monitoring mode, press the [F] button to zoom in (1.0x, 1.5x, 2.0x, 3.0x) the picture.

### LEDs Brightness Control

The 5 levels of LED brightness can be adjusted by pressing the [L] and [R] buttons in real-time monitoring or recording video mode.

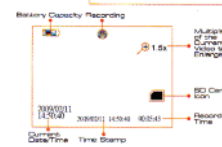


### Recording Video

- In real-time monitoring mode, press the [REC] button to begin recording.
- Press again to stop recording.

Notice!

- The video will be automatically saved as an individual file every 30 minutes.
- "Memory Full" appearing on the LCD screen indicates that the SD card memory is full.



### Taking Photos

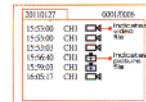
In real-time monitoring mode, press the [P] button to take a photo.

Notice!

- "Memory Full" appearing on the LCD screen indicates that the SD card memory is full.

### Playback Video/Picture

- In real-time monitoring mode, press the [F] button to toggle to the video/picture folder.
- Press the [L] and [R] buttons to select your desired folder,



and then press 'OK' button to toggle to the right interface:

Notice!

- Mark [V] next to a file name indicates that the file is a video, mark [P] next to a file indicates that the file is a picture.

### 3. Playback Video:

Press the [L] or [R] button to select your desired video, and then press 'OK' button to playback.

Pause: press the 'OK' button once to pause, press again to resume play.

Fast Forward: press and hold the [R] button until the Current Playback Mode icon switches to [FF]

Rewind: press and hold the [L] button until the Current Playback Mode icon switches to [REW]

Stop/Exit: press the 'MENU' button.

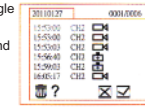
View Pictures:

Press the [L] or [R] buttons to select your desired video, press 'OK' or 'MENU' button to view and press again to exit.



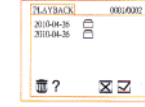
### Deleting Video/Picture

- In real-time monitoring mode press the [F] button to toggle to the video/picture folder.
- Press the [L] or [R] button to select your desired folder, and then press the 'OK' button.
- Press the [L] or [R] button to select your desired file, and then press the [DEL] button and the right interface appears.
- Press the [L] or [R] button to toggle between [YES] and [NO], that is, to cancel or delete. Once you have highlighted your desired selection, press the 'OK' button.



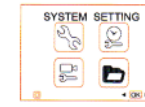
### Deleting Folder

Deleting a folder is done in the same way as deleting a single file.



### How to Enter the Setting Mode

In real-time monitoring mode, press the 'MENU' button:



### Language Setting

- In the setting mode, press the [L] or [R] button to select 'SYSTEM SETTING' and then press 'OK' button.
- Press the [L] or [R] button to select 'Language' and then press 'OK' button, the following interface will appear:
- Press the [L] or [R] button to select your desired language.
- Press 'OK' button to confirm and press 'MENU' button to exit.



### Video System Setting

- In the setting mode, press the [L] or [R] button to select 'SYSTEM SETTING' and then press 'OK' button.
- Press the [L] or [R] button to select 'Video System' and then press the 'OK' button.
- Press the [L] or [R] button to toggle between NTSC and PAL. Once your desired system is selected, press 'OK' button to confirm and press 'MENU' button to exit.

### Formatting

- In the setting mode, press the [L] or [R] button to select 'SYSTEM SETTING' and then press 'OK' button.
- Press the [L] or [R] button to select 'Format' and then press the 'OK' button.
- Press the [L] or [R] button to toggle between YES and NO, that is, to format or cancel. Press 'OK' button to confirm and press 'MENU' button to exit.

### Default Setup

- In the setting mode, press the [L] or [R] button to select 'SYSTEM SETTING' and then press 'OK' button.
- Press the [L] or [R] button to select 'Default Setup' and then press the 'OK' button.
- Press the [L] or [R] button to toggle between YES and NO, that is, to restore default or cancel. Press 'OK' button to confirm and press 'MENU' button to exit.

### View Version Information

- In the setting mode, press the [L] or [R] button to select 'SYSTEM SETTING' and then press 'OK' button.
- Press the [L] or [R] button to select 'Version' and then press the 'OK' button. You will now be able to view the version details of your product.

### Date/Time Setting

- In the setting mode, press the [L] or [R] button to select 'Date/Time' and then press 'OK', the right interface will appear:
- Press 'OK' button to select Date or Time; Press the [L] or [R] button to adjust selection; Press the 'MENU' button to confirm and exit.



## Frame Rate Setting

- In the setting mode, press the [L] or [R] button to select 'RECORDER SETTING' and then press 'OK' button.
- Press the [L] or [R] button to select 'Frame Rate' and then press the 'OK' button.
- Press the [L] or [R] button to toggle between different frame rates. Once you have highlighted your desired selection, press 'OK' button to confirm and press 'MENU' button to exit.

## Time Stamp Setting

- In the setting mode, press the [L] or [R] button to select 'RECORDER SETTING' and then press 'OK' button.
- Press the [L] or [R] button to select 'Time Stamp' and then press the 'OK' button.
- Press the [L] or [R] button to toggle between on and off. Once your desired selection is made, press 'OK' button to confirm and press 'MENU' button to exit.

## Event Playback

- In the setting mode, press the [L] or [R] button to select 'EVENT PLAYBACK' and then press 'OK' button.
- Refer to the user manual instructions on Playback of Video/Picture, Deleting Video/Picture and Deleting Folder for guidance.

## SPECIFICATIONS

	CMOS
Imaging Sensor	CMOS
Total Pixels	640 x 480 (PAL); 640 x 480 (NTSC)
Horizontal Viewing Angle	36°
Minimum Illumination	0 Lux
Power Supply	4x AA batteries
Waterproof Capacity	IP67 (for lens/tube only)
LCD Screen Type	2.7" TFT-LCD
Tube Diameter	9mm
LCD Effective Pixels	960 x 240
Video System	PAL/NTSC
Capacity of SD Card	Support up to 32GB
Picture Type	JPEG
Video Type	AVI
Picture/Video Pixels	640 x 480
Video Size	27M byte/minute
Frame Rate	5-30 frame/second (optional)
Data Transmission	USB 2.0
Dimensions (W x D x H)	263 x 86 x 49mm (excluding flexible tube)
Approx. Weight	420g
Operating Temperature	-10°C to +50°C (14°F to 122°F)
Operating Humidity (Max.)	15 to 85%RH

## FCC INFORMATION

This device complies with part 15 of the FCC Rules. Operation is subject to the following two conditions:

- (1) This device may not cause harmful interference.
- (2) This device must accept any interference received, including interference that may cause undesired operation. Changes or modifications not expressly approved by the party responsible for compliance could void the user's authority to operate the equipment.

The graphics included in this user manual are subject to minor change without notice.